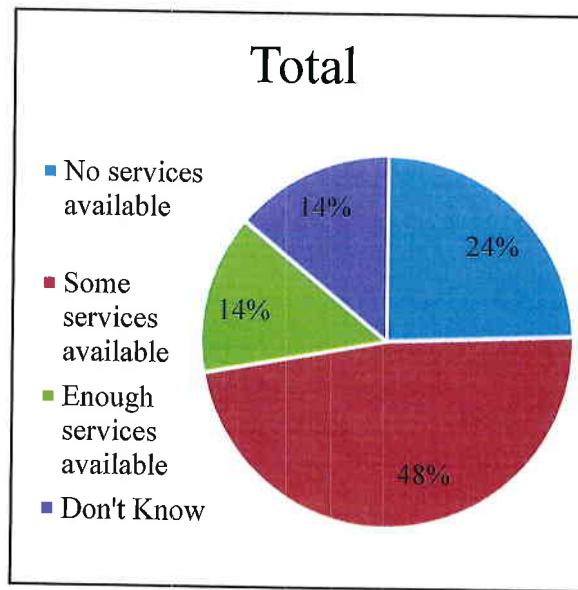
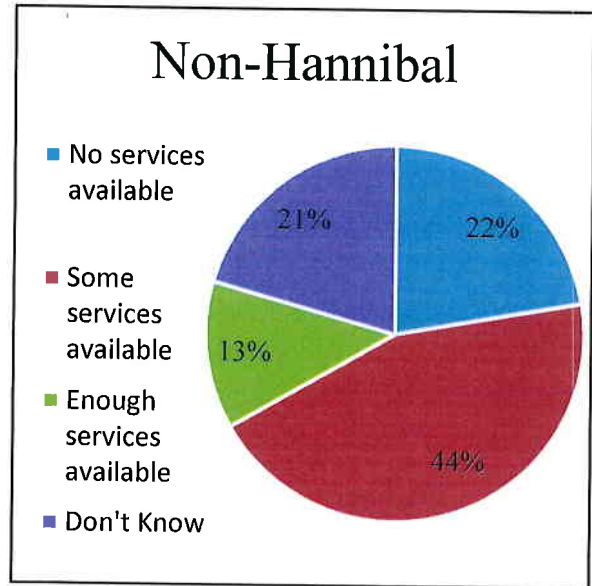
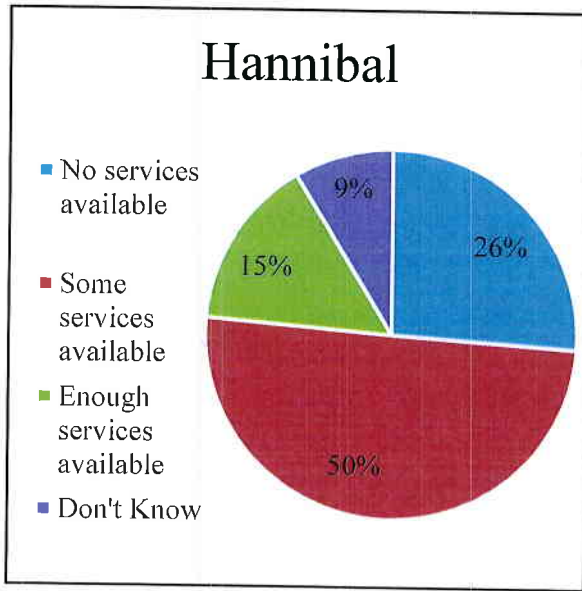
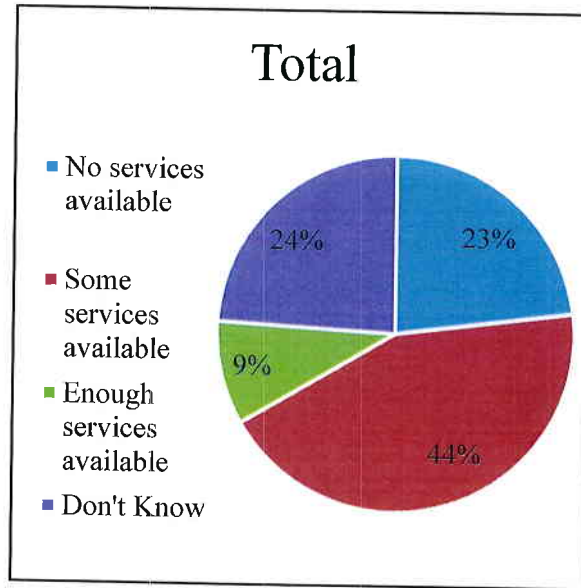
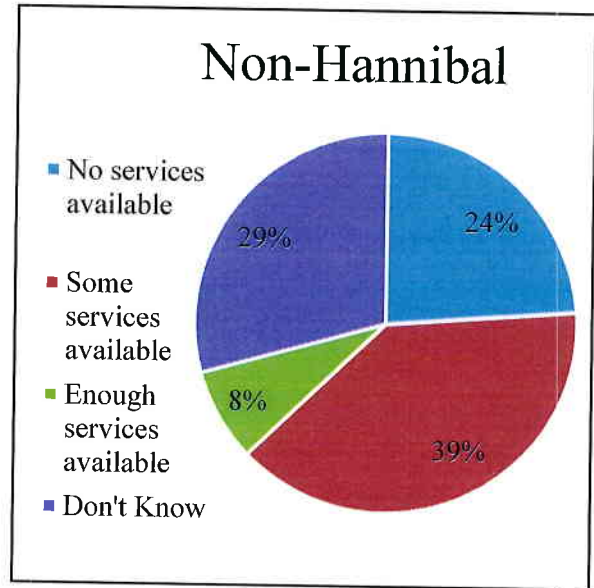
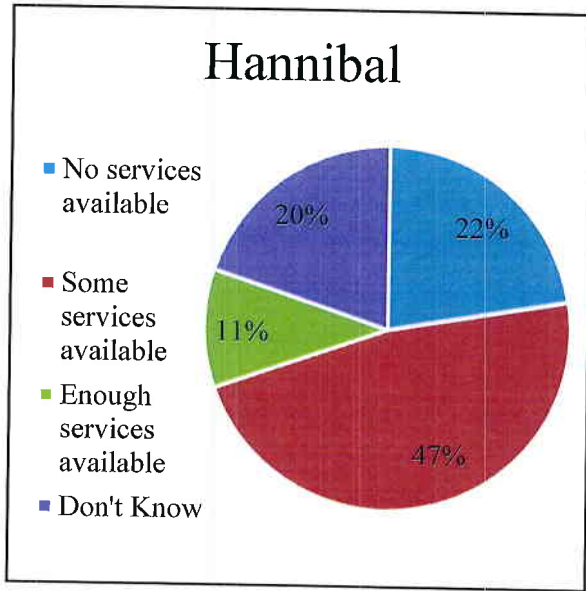


Public Transportation



City	No services available	Some services available	Enough services available	Don't Know	Total
Hannibal	42	81	24	14	161
Non-Hannibal	28	56	16	26	126
Total	70	137	40	40	287

Dental Services



City	No services available	Some services available	Enough services available	Don't Know	Total
Hannibal	36	76	17	32	161
Non-Hannibal	30	49	10	37	126
Total	66	125	27	69	287

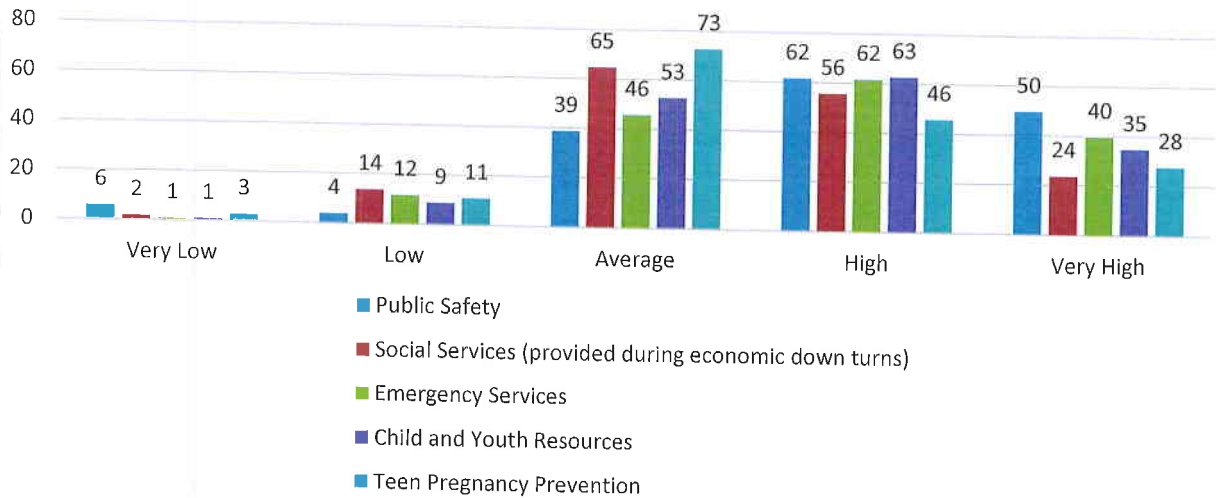
How would you rate the following elements that contribute to the quality of life in the Mark Twain area?

Hannibal	Very Low	Low	Average	High	Very High
Public Safety	6	4	39	62	50
Social Services (provided during economic down turns)	2	14	65	56	24
Emergency Services	1	12	46	62	40
Child and Youth Resources	1	9	53	63	35
Teen Pregnancy Prevention	3	11	73	46	28

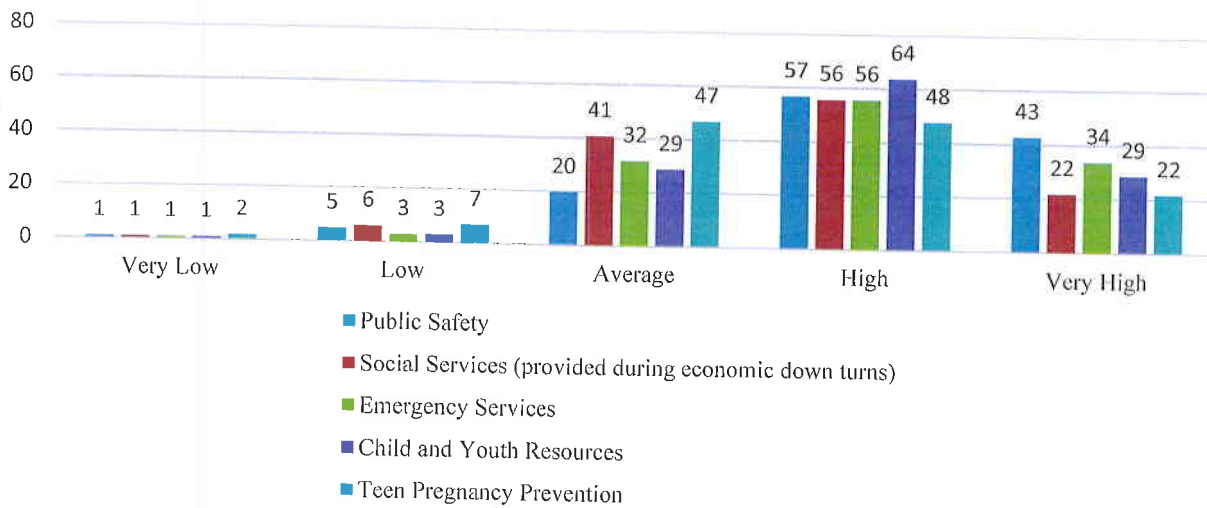
Non-Hannibal	Very Low	Low	Average	High	Very High
Public Safety	1	5	20	57	43
Social Services (provided during economic down turns)	1	6	41	56	22
Emergency Services	1	3	32	56	34
Child and Youth Resources	1	3	29	64	29
Teen Pregnancy Prevention	2	7	47	48	22

Total	Very Low	Low	Average	High	Very High
Public Safety	7	9	59	119	93
Social Services (provided during economic down turns)	3	20	106	112	46
Emergency Services	2	15	78	118	74
Child and Youth Resources	2	12	82	127	64
Teen Pregnancy Prevention	5	18	120	94	50

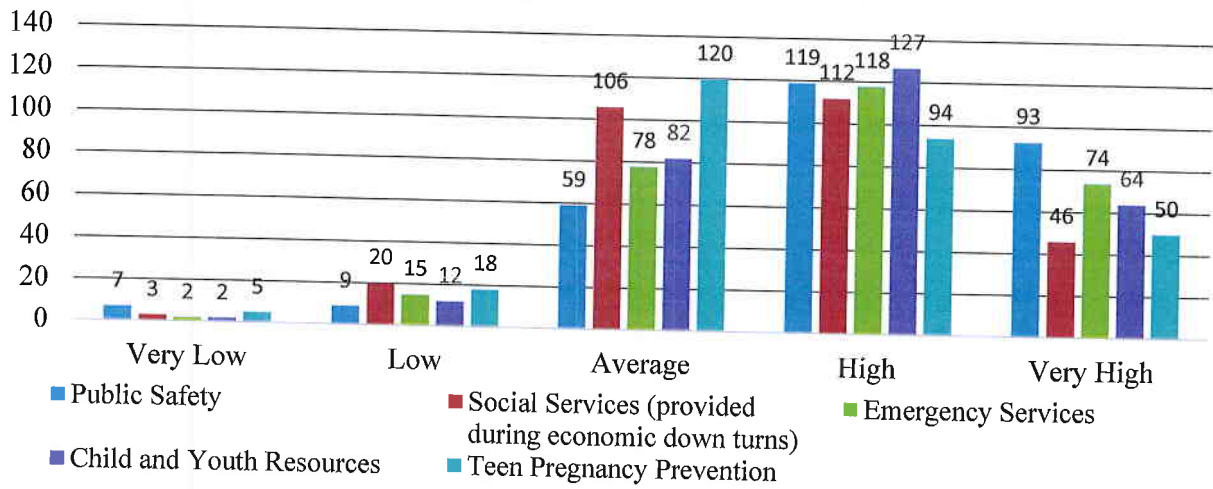
Ratings of Elements that Contribute to Quality of Life - Hannibal



Ratings of Elements that Contribute to Quality of Life - Non-Hannibal



Rating of Elements that Contribute to Quality of Life - Total



Comments

Services and Activities

- My town does not have services like the other towns listed. It is a shame and is sad that help is not available. We are between New London and Perry so what is the issue???
- Need more child care.
- After school activities.
- Free ESL Classes
- Financial advisement, such as, debt reduction, retirement, etc.
- There is a need for a fully functional homeless shelter. Public transportation enhancement is needed. Huge need for affordable, decent housing.
- Training for caregiver for people who have had a stroke.
- Public Transportation is a must need for this community. We have food deserts in Hannibal where low income families are living and they have to walk miles or wait for some sort of transportation to get to the nearest grocery store. For example one of the poorest areas of Hannibal has no access to a grocery store or gas station. The nearest store or gas station to them is 2 or more miles. Affordable safe housing is a huge need as well in our community.
- Letting people know what is available in their area.
- Racial disparities in provision of services, lack of mental health services, lack of community based services, and lack of school based mental health services.
- 1) The need for education for adults seeking pregnancy and/or marriage in regards to raising children/dealing with the stress of raising a family, paying bills, having a structured, stable environment for children for infancy thru young adult. It would be great to see proactive, preventative measures taken vs. parents trying to find education/counseling after the problems arise.
2) Education of safe sex/abstinence/birth control/STD transmission - not condemning or commending an individual's choice, but providing him/her facts and information so that the consequences are understood, before any action is taken or not taken.

Health and Wellness

- Mental Health needs -- especially eating disorders (highest mortality rate among all mental illnesses, insurance usually doesn't cover at all, almost no help in NE MO).
- Free psychological counseling for depression within this people seeking therapy talk to doctor for as long as they want at an appointment. Doctors respond to patient's calls within 5 minutes or less.
- Dental help.
- Need more options for addictions and mental health.
- I just want to emphasize I do not feel there is enough dental services available.
- Drug awareness.

- Need of universal health coverage, improvements of mental health services, and non-profit networks in area.
- Would like more job opportunities for the mentally disabled.

Town improvements

- Inner city decay of the physical aspects of Hannibal. Main Street looks great. The rest of the town-terrible.

Miscellaneous

- Please add multicultural next time!
- Well covered!
- Most of these were answered no only because I don't know what services are provided. I assume UW would be there in need. I just haven't witnessed it.
- Leadership to stem the brain drain from this area. Lifelong learning opportunities. Needs of rural hospital to stay intact.
- MT United Way needs to develop an accountability model that can ensure its donors their investment in agencies is making a difference in the community i.e. the United Way agencies need to also be held accountable for the dollars they receive i.e. are the dollars invested in any and all agencies making a difference or just giving away funds. Agencies should be required to submit goals and objectives annually and MTUW evaluate the progress toward the goals/objectives annually when making decisions on whether to continue funding agencies.
- My belief is that people choose to be poor through their bad decision making. I have no issue with my tax money going toward helping the truly needy (i.e., children of those parents making bad decisions, handicapped folks, etc.) but have a major problem with subsidizing the economic well-being of those that choose to be losers and government sycophants.
- I can't think of any needs that were omitted in this survey at this time.
- I'm not sure what you are going to gain from this survey. Other than if people do not know what the United way provides is to better inform the community.